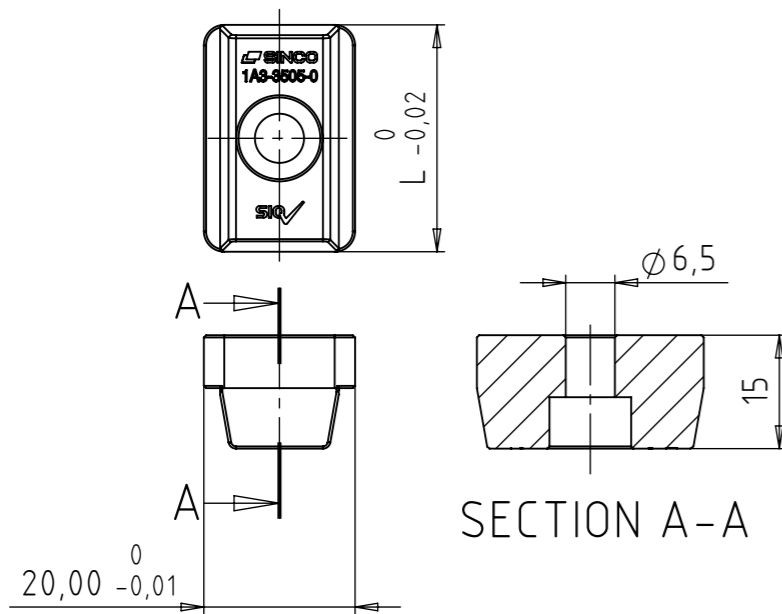


ISOMETRIC VIEW

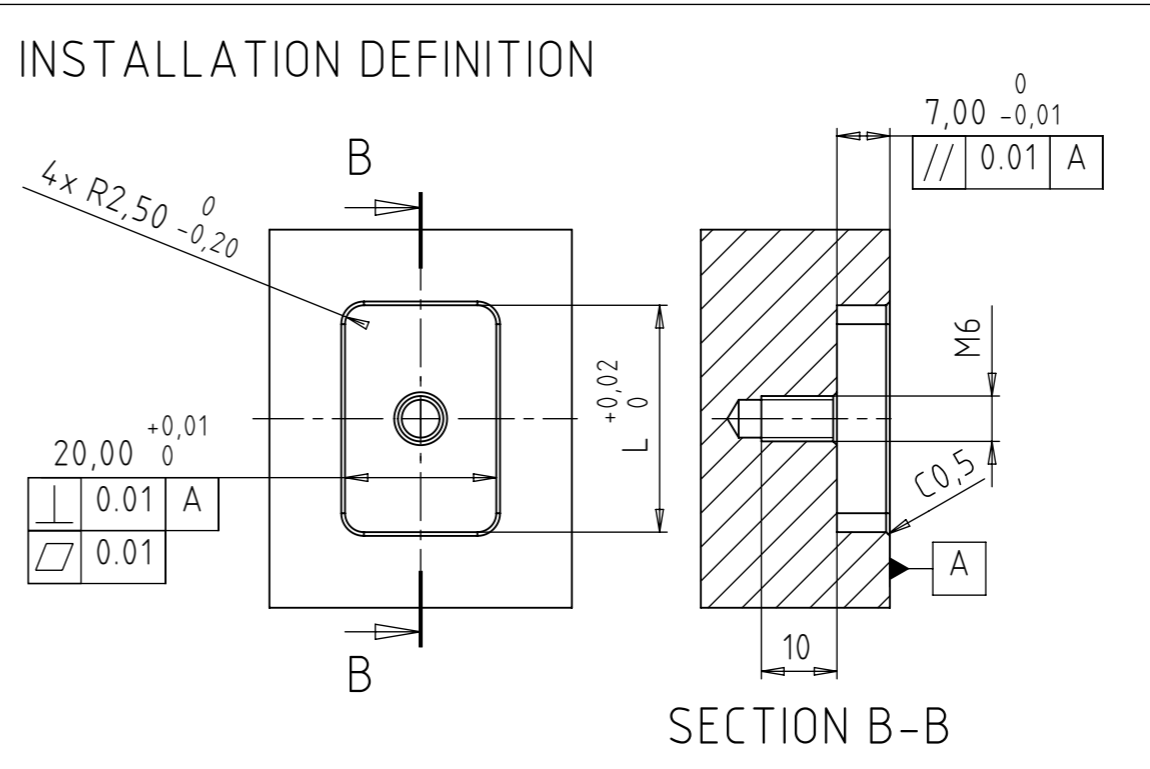
NOTES:

1. ONLY IMPORTANT DIMENSIONS ARE SHOWN ON THE DRAWING.
2. ALL GEOMETRY SHOULD CORRESPOND WITH THE CAD MODEL. GENERAL TOLERANCES HAVE TO BE APPLIED TO MISSING DIMENSIONS TAKEN FROM CAD MODEL.
3. PART MUST BE FREE OF BURR AND IMPERFECTIONS THAT MIGHT AFFECT FIT OR FUNCTION.
4. MATERIAL: CORROSION RESISTANT STEEL



SECTION A-A

SECTION B-B



	Part name	Part number	L	Weight (g)
1	MZ Slot Rail W20 L30	1A3-3505-0	30	46
2	MZ Slot Rail W20 L35	1A3-3510-0	35	56
3	MZ Slot Rail W20 L40	1A3-3515-0	40	66
4	MZ Slot Rail W20 L45	1A3-3520-0	45	76

No.	DATE	REVISION RECORD	SIGN.
-	24.02.2025.	NEW	S.S.

ISO TOL.	PROJ. EUROP.	SCALE: 1:1	DO NOT SCALE DRAWING	
	NAME: Sinko S.	SIGNATURE:	DATE: 24.02.2025.	PART NAME: MULTIZERO SLOT RAIL W20 L30
	DESIGNED BY:			PRODUCT: MULTIZERO ACCESSORIES
	CONTROL BY:			PART NUMBER: 1A3-3505-0
	APPROV. BY: Sinko S.		DATE: 24.02.2025.	DRAWING NUMBER: 1A3-3505-0-C
	MATERIAL: SEE NOTES	WEIGHT: -		PROJECT NO: -
	RAW DIM: -	HEAT TREATMENT: YES		POSITION: -
	GENERAL TOLERANCES FOR DIMENSIONS ACC. ISO 2768-1: f			NO. OF PARTS: -
	INDICATIONS OF FORM AND POSITION ACC. TO ISO 1101			PAPER SIZE: A3
	SURFACE ROUGHNESS INDICATIONS ACC. TO ISO 1302			PAGE: 1
	PERMISSIBLE DEVIATIONS FOR LINEAR DIMENSIONS ISO 2768-1 EXTRACT			PAGES: 1
	LINEAR TOLERANCE			
	SLOVENSKA VAS 4j, 8261 JESENICE NA DOL., SLOVENIJA			
	TEL: +386 (0)7 49 57 371			