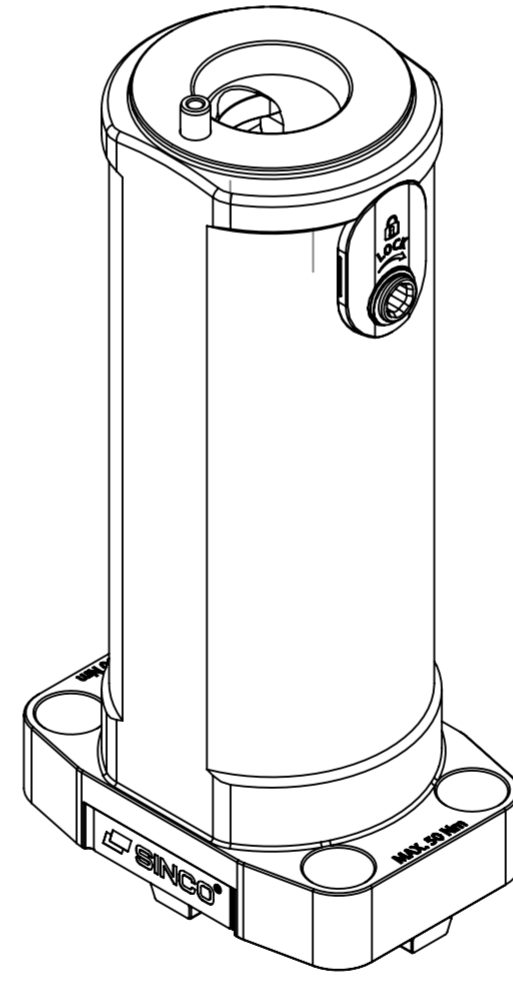
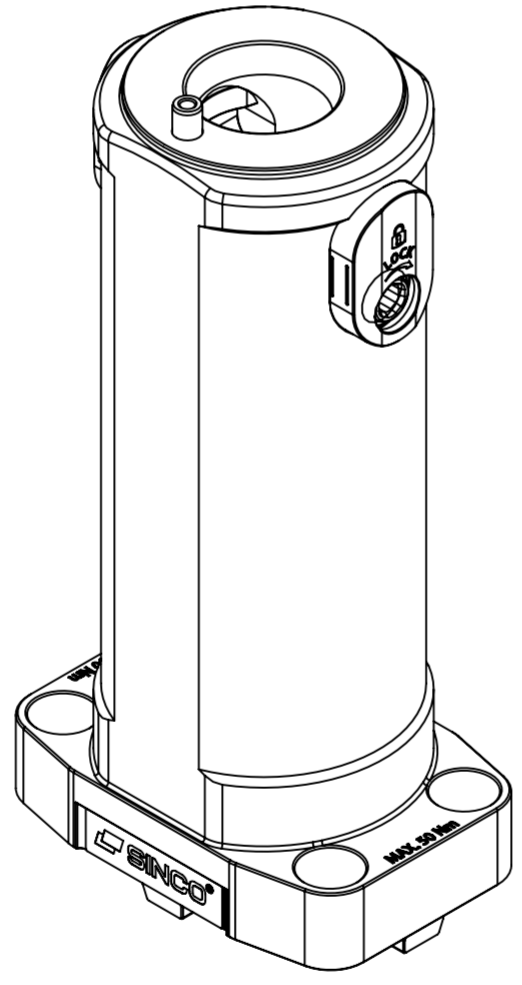
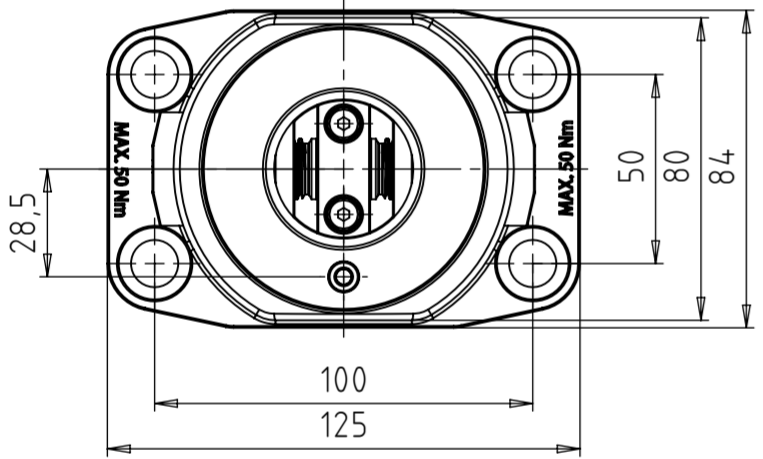
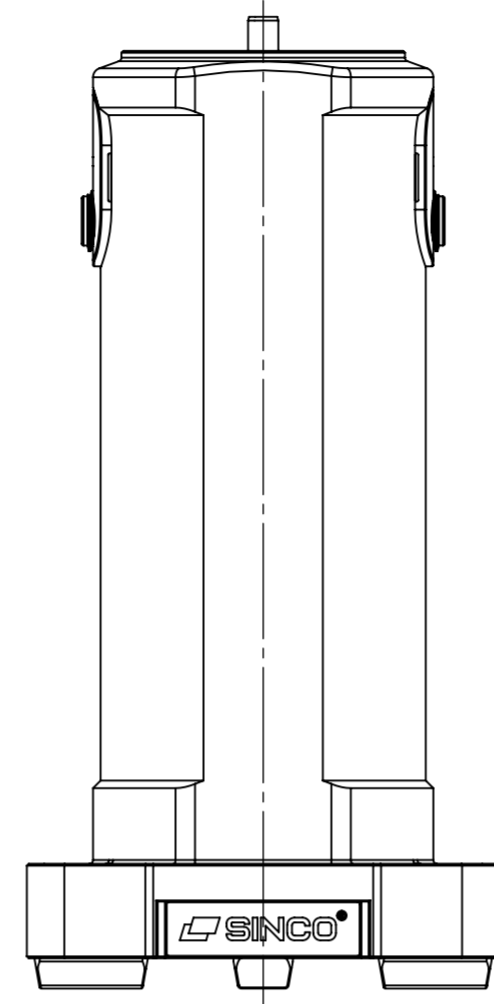
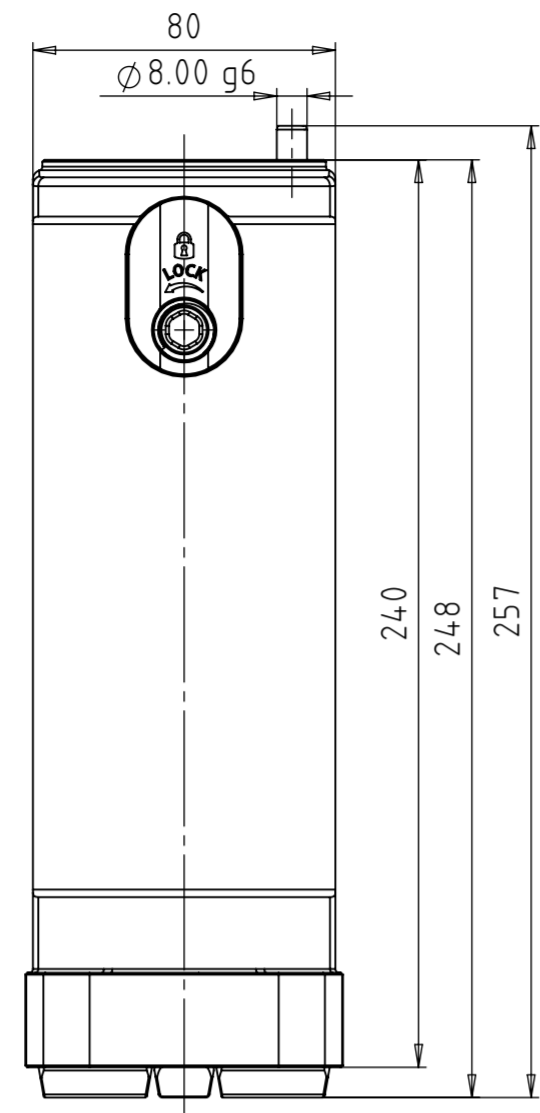
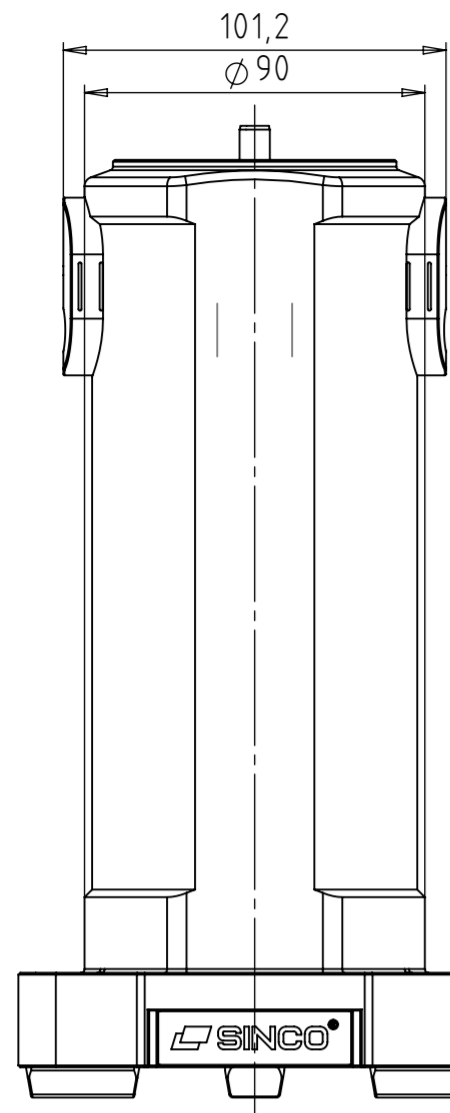


OPEN

CLOSED



- NOTES:
- ONLY IMPORTANT DIMENSIONS ARE SHOWN ON THE DRAWING.
 - ALL GEOMETRY SHOULD CORRESPOND WITH THE CAD MODEL. GENERAL TOLERANCES HAVE TO BE APPLIED TO MISSING DIMENSIONS TAKEN FROM CAD MODEL.
 - ASSEMBLY MUST BE FREE OF BURR AND IMPERFECTIONS THAT MIGHT AFFECT FIT OR FUNCTION.
 - CLAMPING FORCE: 15 kN max.
 - CLAMPING TORQUE MAX.: 50 Nm MUST NOT BE EXCEEDED.
 - SURFACES MUST BE VISUALLY UNIFORM AND WITHOUT DAMAGES AND IMPERFECTIONS SUCH AS SCRATCHES, STAINS AND BURR.
 - CHECK FUNCTION AND GREASE REGULARY. RECOMMENDED LUBRICANT MOLYKOTE TP42 OR SIMILAR.
 - PARTS LIST DOCUMENT: 3B6-1330-0-P

No.	DATE	REVISION RECORD	SIGN.
-	17.04.2025.	NEW	S.S.

ISO TOL.	PROJ. EUROP.	SCALE: 1:2	DO NOT SCALE DRAWING
	NAME: Sinko S.	SIGNATURE:	DATE: 17.04.2025
	DESIGNED BY:		PROJECT: MULTIZERO RISER
	CONTROL BY:		PART NUMBER: 3B6-1330-0
	APPROV. BY: Sinko S.		DRAWING NUMBER: 3B6-1330-0-C
	MATERIAL:	WEIGHT: 11,15 kg	
	RAW DIM:	HEAT TREATMENT:	
<small>GENERAL TOLERANCES FOR DIMENSIONS ACC. ISO 2768-1 f GEOMETRICAL TOLERANCES ACC. ISO 2768-2 1H INDICATIONS OF FORM AND POSITION ACC. TO ISO 1101 SURFACE ROUGHNESS INDICATIONS ACC. TO ISO 1302</small>			
<small>PERMISSIBLE DEVIATIONS FOR ORDER DIMENSIONS SIZE RANGE (up to 30) <math>\pm 0,1</math> (30 to 120) <math>\pm 0,15</math> (120 to 300) <math>\pm 0,2</math> (300 to 500) <math>\pm 0,25</math> ISO 2768-1 EXTRACT LINEAR TOLERANCE: (0,05) (0,05) (0,10) (0,15) (0,20) (0,30) (0,50)</small>			
			Slovenska vas 4j, 8261 Jesenice na Dol., Slovenija Tel: +386 (0)7 4 9 5 7 3 7 1
			PAPER SIZE: A2
			PAGE: 1
			PAGES: 1